



CONTRATUERCAS

CONTRATUERCA NIQ

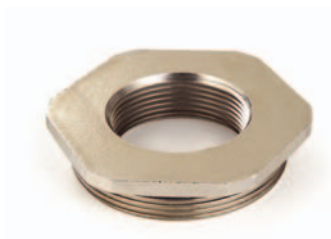


REF.	ROSCA	EMB.
301M12	M12x1,5	100
301M16	M16x1,5	100
301M20	M20x1,5	100
301M25	M25x1,5	100
301M32	M32x1,5	100
301M40	M40x1,5	50
301M50	M50x1,5	50
301M63	M63x1,5	50
301M75	M75x1,5	-
30107	Pg. 7	100
30109	Pg. 9	100
30111	Pg. 11	100
30113	Pg. 13,5	100
30116	Pg. 16	100
30121	Pg. 21	100
30129	Pg. 29	50
30136	Pg. 36	50
30142*	Pg. 42	50
30148	Pg. 48	50

* Bajo demanda.

Contratuercas hexagonal de latón
níquelado.

REDUCCIÓN NIQ



REF.	ROSCA	EMB.
307M16M12	M16/M12	100
307M20M12	M20/M12	100
307M20M16	M20/M16	100
307M25M16	M25/M16	100
307M25M20	M25/M20	100
307M32M16	M32/M16	50
307M32M20	M32/M20	50
307M32M25	M32/M25	50
307M40M20	M40/M20	25
307M40M25	M40/M25	25
307M40M32	M40/M32	25
307M50M25	M50/M25	10
307M50M32	M50/M32	10
307M50M40	M50/M40	10
307M63M32	M63/M32	10
307M63M40	M63/M40	10
307M63M50	M63/M50	10



3070907-G	Pg 9/Pg 7	100
3071107-G	Pg11/Pg 7	100
3071109-G	Pg 11/Pg 9	100
3071309-G	Pg 13/Pg 9	100
3071311-G	Pg 13/Pg 11	100
3071609-G	Pg 16/Pg 9	100
3071611-G	Pg 16/Pg 11	100
3071613-G	Pg 16/Pg 13	100
3072111-G	Pg 21/Pg 11	100
3072113-G	Pg 21/Pg 13	100
3072116-G	Pg 21/Pg 16	100
3072916-G	Pg 29/Pg 16	50
3072921-G	Pg 29/Pg 21	50
3073629-G	Pg 36/Pg 29	25
3074229-G	Pg 42/Pg 29	10
3074236-G	Pg 42/Pg 36	10
3074836-G	Pg 48/Pg 36	10

Reducción
de latón niquelado.



AMPLIFICACIÓN NIQ

REF.	ROSCA	EMB.
308M12M16	M12/M16	100
308M16M20	M16/M20	100
308M20M25	M20/M25	50
308M25M32	M25/M32	25
308M32M40	M32/M40	25
308M40M50	M40/M50	10
308M50M63	M50/M63	10



3080709	Pg 7/Pg 9	100
3080911	Pg 9/Pg 11	100
3080913	Pg 9/Pg 13	100
3081113	Pg 11/Pg 13	100
3081116	Pg 11/Pg 16	100
3081316	Pg 13/Pg 16	100
3081621	Pg 16/Pg 21	100
3082129	Pg 21/Pg 29	50
3082936	Pg 29/Pg 36	25
3083648	Pg 36/Pg 48	10



Amplificación de latón niquelado.

TAPÓN NIQ



REF.	ROSCA	EMB.
304M12	M12x1,5	100
304M16	M16x1,5	100
304M20	M20x1,5	100
304M25	M25x1,5	100
304M32	M32x1,5	50
304M40	M40x1,5	50
304M50	M50x1,5	25
304M63	M63x1,5	10
30407	Pg. 7	100
30409	Pg. 9	100
30411	Pg. 11	100
30413	Pg. 13,5	100
30416	Pg. 16	100
30421	Pg. 21	100
30429	Pg. 29	50
30436	Pg. 36	25
30442*	Pg. 42	25
30448	Pg. 48	10

Tapón roscado de latón
niquelado.

* Bajo demanda.



CONVERTIDOR NIQ



REF.	EMB.
Rosca: externa Métrica/interna Pg.	
355M12PG7	100
355M12PG9	100
355M16PG11	100
355M20PG9	100
355M20PG11	100
355M20PG13	100
355M20PG16	100
355M25PG11	100
355M25PG13	100
355M25PG16	50
355M25PG21	50
355M32PG16	50
355M32PG21	50
355M32PG29	25
355M40PG29	25
355M40PG36	25
355M50PG29	10
355M50PG36	10
355M50PG48	10
355M63PG36	10
355M63PG48	5



Convertidor de rosca
de latón niquelado

Rosca: externa Pg./interna Métrica	
355PG7M12	100
355PG9M16	100
355PG11M16	100
355PG13M20	100
355PG16M20	100
355PG16M25	100
355PG21M25	100
355PG21M32	100
355PG29M25	50
355PG29M40	50
355PG36M50	25
355PG42M63	10



CONTRATUERCAS

CONTRATUERCA PLAS PA



REF. GRIS 7001	REF. GRIS 7035	REF. NEGRO	ROSCA	EMB.
332M12/7001	332M12G	332M12N	M12x1,5	100
332M16/7001	332M16G	332M16N	M16x1,5	100
332M20/7001	332M20G	332M20N	M20x1,5	100
332M25/7001	332M25G	332M25N	M25x1,5	100
332M32/7001	332M32G	332M32N	M32x1,5	100
332M40/7001	332M40G	332M40N	M40x1,5	50
332M50/7001	332M50G	332M50N	M50x1,5	50
332M63/7001	332M63G	332M63N	M63x1,5	50
33207/7001	33207G	33207N	Pg. 7	100
33209/7001	33209G	33209N	Pg. 9	100
33211/7001	33211G	33211N	Pg. 11	100
33213/7001	33213G	33213N	Pg. 13,5	100
33216/7001	33216G	33216N	Pg. 16	100
33221/7001	33221G	33221N	Pg. 21	100
33229/7001	33229G	33229N	Pg. 29	50
33236/7001	33236G	33236N	Pg. 36	50
33248/7001	33248G	33248N	Pg. 48	50

Contratuerca hexagonal de poliamida.
Color gris RAL 7001 y RAL 7035, Color negro.



CONTRATUERCAS

CONTRATUERCA PLAS AC



REF. GRIS	ROSCA	EMB.
303M12SB	M12x1,5	100
303M16SB	M16x1,5	100
303M20SB	M20x1,5	100
303M25SB	M25x1,5	100
303M32SB	M32x1,5	100
303M40SB	M40x1,5	50
303M50SB	M50x1,5	50
303M63SB	M63x1,5	50
30307SB	Pg. 7	100
30309SB	Pg. 9	100
30311SB	Pg. 11	100
30313SB	Pg. 13,5	100
30316SB	Pg. 16	100
30321SB	Pg. 21	100
30329SB	Pg. 29	100
30336SB	Pg. 36	50
30348SB	Pg. 48	50

Contratuerca hexagonal de plástico antichoque.
Color gris.

REDUCCIÓN PA



REF.	ROSCA	EMB.
309M16M12	M16/M12	100
309M20M12	M20/M12	100
309M20M16	M20/M16	100
309M25M12	M25/M12	100
309M25M16	M25/M16	100
309M25M20	M25/M20	100
309M32M12	M32/M12	50
309M32M16	M32/M16	50
309M32M20	M32/M20	50
309M32M25	M32/M25	50
309M40M16	M40/M16	50
309M40M20	M40/M20	50
309M40M25	M40/M25	50
309M40M32	M40/M32	50
309M50M20	M50/M20	25
309M50M25	M50/M25	25
309M50M32	M50/M32	25
309M50M40	M50/M40	25
309M63M25	M63/M25	25
309M63M32	M63/M32	25
309M63M40	M63/M40	25
309M63M50	M63/M50	25
3090907	Pg 9/Pg 7	100
3091107	Pg 11/Pg 7	100
3091109	Pg 11/Pg 9	100
3091309	Pg 13/Pg 9	100
3091311	Pg 13/Pg 11	100
3091609	Pg 16/Pg 9	100
3091611	Pg 16/Pg 11	100
3091613	Pg 16/Pg 13	100
3092111	Pg 21/Pg 11	100
3092113	Pg 21/Pg 13	100
3092116	Pg 21/Pg 16	100
3092916	Pg 29/Pg 16	50
3092921	Pg 29/Pg 21	50
3093629	Pg 36/Pg 29	25
3094836	Pg 48/Pg 36	25

Reducción
de poliamida.



CONTIELEC

AMPLIFICACIÓN PA

REF.	ROSCA	EMB.
310M12M16	M12/M16	100
310M16M20	M16/M20	100
310M20M25	M20/M25	100
310M25M32	M25/M32	50
310M32M40	M32/M40	50



3100709	Pg 7/Pg 9	100
3100911	Pg 9/Pg 11	100
3101113	Pg 11/Pg 13	100
3101116	Pg 11/Pg 16	100
3101316	Pg 13/Pg 16	100
3101621	Pg 16/Pg 21	100
3102129	Pg 21/Pg 29	50
3102936	Pg 29/Pg 36	25

Amplificación de poliamida.

TAPÓN PA



Tapón roscado de poliamida. Color gris.

REF.	ROSCA	EMB.
305M12PA	M12x1,5	100
305M16PA	M16x1,5	100
305M20PA	M20x1,5	100
305M25PA	M25x1,5	100
305M32PA	M32x1,5	100
305M40PA	M40x1,5	50
305M50PA	M50x1,5	50
305M63PA	M63x1,5	50



TAPÓN AC



REF.	ROSCA	EMB.
30507	Pg. 7	100
30509	Pg. 9	100
30511	Pg. 11	100
30513	Pg. 13,5	100
30516	Pg. 16	100
30521	Pg. 21	50
30529	Pg. 29	20
30536	Pg. 36	10
30542*	Pg. 42	10
30548	Pg. 48	10

Tapón roscado de plástico antichoque. Color gris.

* Bajo demanda.



CONVERTIDOR PA

REF.	EMB.
Rosca: externa Métrica /interna Pg.	
356M12PG7	100
356M12PG9	100
356M16PG9	100
-	-
356M20PG11	100
356M20PG13	100
356M20PG16	100
-	-
-	-
356M25PG16	50
356M25PG21	50
-	-
-	-
356M32PG29	25
356M40PG29	10
-	-
-	-
356M50PG36	10
-	-
-	-
356M63PG48	10

Rosca: externa Pg. /interna Métrica	
356PG7M12	100
356PG9M16	100
356PG11M16	100
356PG13M20	100
356PG16M20	100
356PG16M25	50
356PG21M25	50
356PG21M32	50
356PG29M32	50
-	-
-	-
-	-



Convertidor de
rosca de poliamida

JUNTA PLANA

Junta plana
de caucho plastificado.



REF.	Ø ext. mm.	Ø int. mm.	ALTURA
32407	10.7	6	5
32409	13.3	7	5.5
32411	16.5	9	6
32413	18.3	11	6
32416	20.4	13	7
32421	25.9	16	8
32429	34.7	25	9.5
32436	44.7	32	12
32448	56.9	46	14

JUNTA UNIVERSAL

Junta de aros precortados de caucho plastificado.



REF.	Ø ext. mm.	Ø int. mm.	ALTURA
33309	13.3	5x7x10	5.5
33311	16.5	7x10x12	6
33313	18.5	7x10x12	6
33316	20.5	7x10x12x15	7.5
33321	26.0	10x13x16x19	8
33329	35.0	18x21x24x27	9.5
33336	45.0	24x27x30x33	12
33348	57.0	36x39x42x45	14

JUNTA TÓRICA

Junta tórica
para rosca de conexión.



REF.	Ø ext. mm.	Ø int. mm.	GROSOR
328M12	12	9	2
328M16	16	12	2
328M20	21	17	2
328M25	27	23	2
328M32	34	30	2
328M40	41	37	2
328M50	52	47	2.5
328M63	66	60	3
32807	9	12	1.5
32809	17	13	2
32811	20	16	2
32813	22	18	2
32816	23	19	2
32821	28	24	2
32829	37	33	2
32836	47	42	2.5
32848	60	54	3

JUNTA TESNIT

Junta libre de asbestos,
resistente +200°C permanente.



REF.	Ø ext. mm.	Ø int. mm.	GROSOR
345M12	16	12	1.5
345M16	20	16	1.5
345M20	24	20	1.5
345M25	29	25	1.5
345M32	36	32	2.5
345M40	45	40	2.5
345M50	56	50	2.5
345M63	65	63	1
34509	19	15.2	1.5
34511	22.5	18.6	1.5
34513	25	20.4	1.5
34516	27	22.5	1.5
34521	33.5	28.3	2.5
34529	43.5	37	2.5
34536	55	47	2.5
34548	69	59.3	3

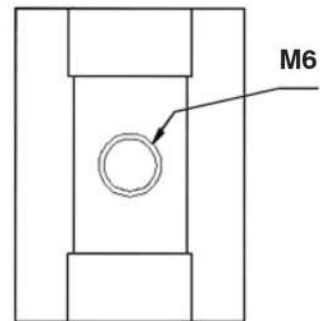
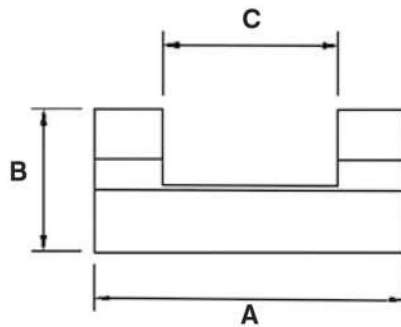


ADAPTADOR ALUMINIO



SOPORTE AC

UNIÓN DE ALUMINIO



Adaptador universal Aluminio para soporte con tapa tipo AC, para guia DIN, con helicoide autoblocante M6 de acero inoxidable.

REF.	SOPORTE AC	DIMENSIONES mm.			
		A	B	C	
RA21254CC	AL21-54	30,3	13,4	17	M6