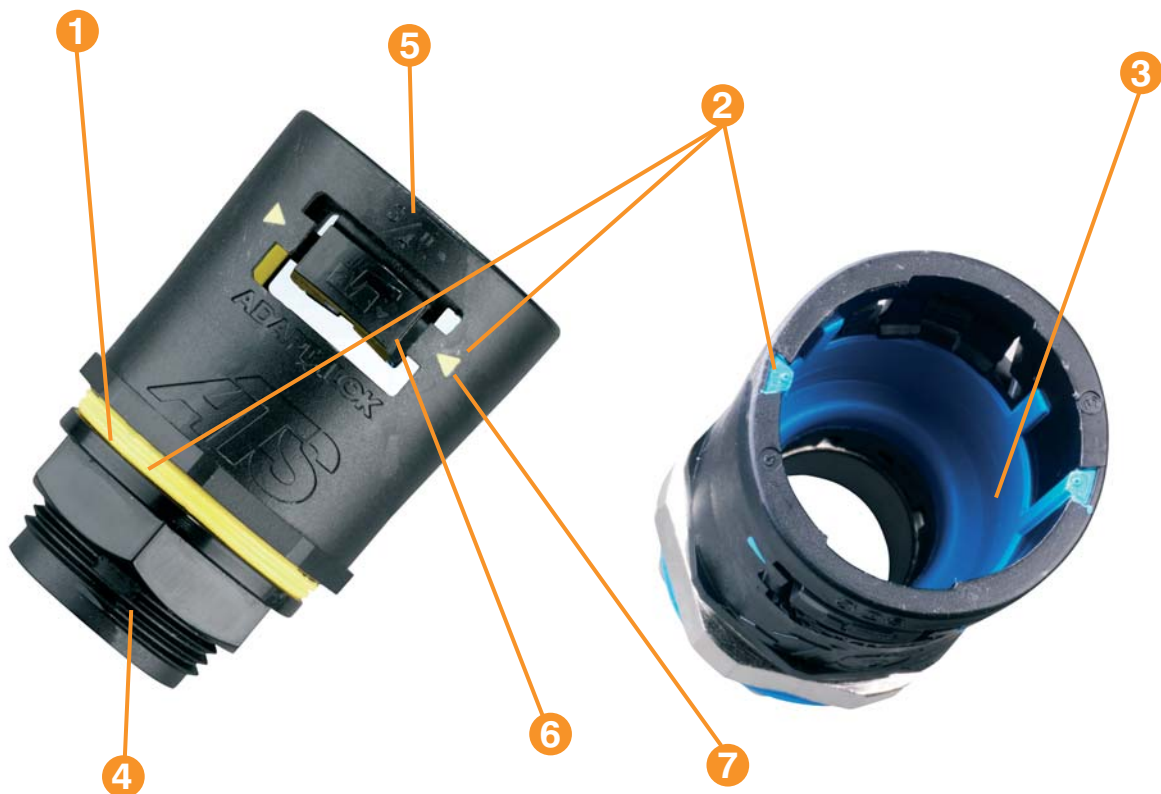


FITTINGS

THE UNIQUE AND ULTIMATE NEW NON METALLIC CONDUIT SYSTEM ADAPTALOK ATS.

Adaptalok ATS represents a unique and innovative solution in flexible conduit systems. Until now manufacturers have produced fittings/elbows and seals separately, and assembled them together, or had the customer assemble them. This increase assembly time and introduces the possibility for errors.

Adaptalok ATS uses a sophisticated moulding process to mould an internal conduit seal and a face seal washer. This makes installation timer very fast, and extremely reliable, because the seals cannot be left out. The conduit system also benefits from the highest IP rating possible.



KEY FEATURES

- 1 Integral face seal washer guaranteed fit, cannot be lost if fitted incorrectly. No assembly.
- 2 High visibility elastomer, 3 visible confirmation points.
- 3 Internal elastomer conduit seal, guaranteed fit, cannot be lost or fitted incorrectly. No assembly & protects cables.
- 4 Thread data, thread size clearly indicated on fitting thread.
- 5 Conduit data, conduit size clearly indicated on fitting.
- 6 Proven clip design, pitch independent, ensures secure fitment to coarse & fine pitch conduits.
- 7 Visual fitting guides, highly visible elastomer markings on lugs, aids correct fitment.

ADDITIONAL KEY FEATURES

Nylon 6.6 body
 IP66, 67, 68 & 69k performance as standard
 One piece fitting, no customer assembly
 UL 1696 version, light blue elastomer (made to order)
 For conduits: PA, PR & PI
 Temperature range:
 Static applications: -50° C / +120° C
 Moving applications: -45° C / +120° C



NF
NORME FRAN AISE



FITTINGS

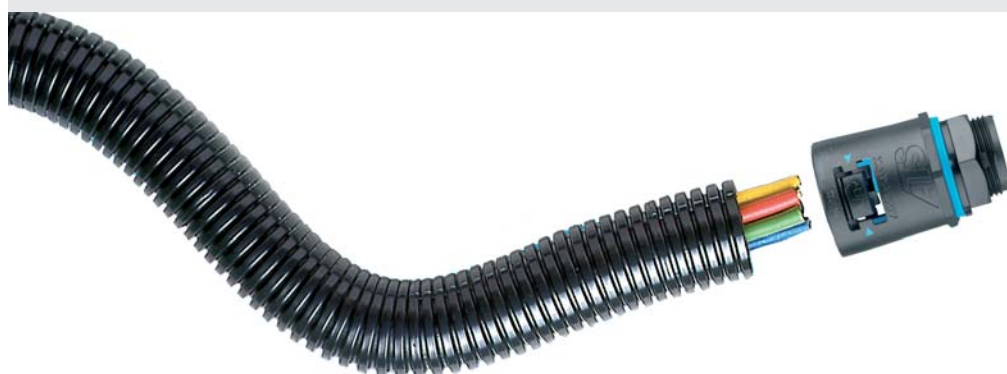
TYPE A IP66, 67, 68 (4 bar 30 min.) y 69k

STRAIGHT FITTING - FIXED EXTERNAL THREAD
Grey (GR) and Black (BL)



Nº	REFERENCE	PACKING
9	AT13/M16/A	10
9	AT13/M20/A	10
11	AT16/M16/A	10
11	AT16/M20/A	10
16	AT21/M20/A	10
16	AT21/M25/A	10
21	AT28/M25/A	10
21	AT28/M32/A	10
29	AT34/M32/A	10
29	AT34/M40/A	10
36	AT42/M40/A	2
36	AT42/M50/A	2
48	AT54/M50/A	2
48	AT54/M63/A	2

Locknut included



ADAPTAFLEX



NF
NORME FRAN AISE



FITTINGS

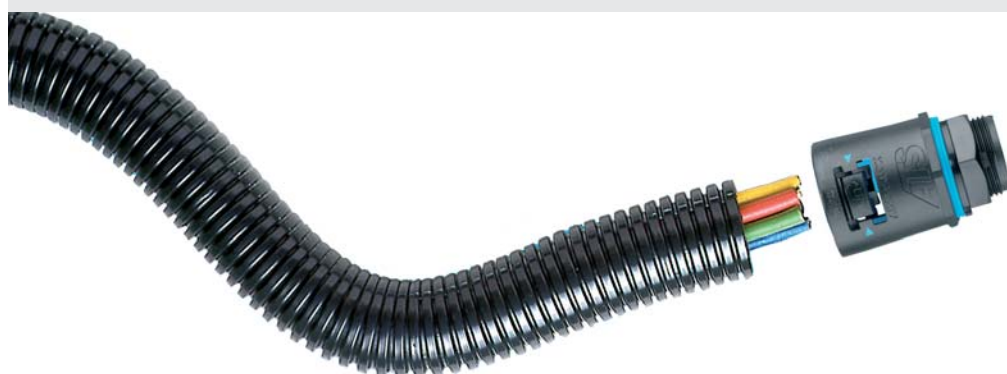
TYPE SA IP66, 67, 68 (4 bar 30 min.) y 69k

STRAIGHT FITTING - SWIVEL
EXTERNAL MALE THREAD
Black (BL)



Nº	REFERENCE	PACKING
9	AT13/M16/SA	10
9	-	-
11	AT16/M16/SA	10
11	-	-
16	AT21/M20/SA	10
16	-	-
21	AT28/M25/SA	10
21	-	-
29	AT34/M32/SA	10
29	-	-
36	AT42/M40/SA	2
36	-	-
48	AT54/M50/SA	2
48	AT54/M63/SA	2

*Grey colour - Made to order





NF
NORME FRAN AISE



FITTINGS

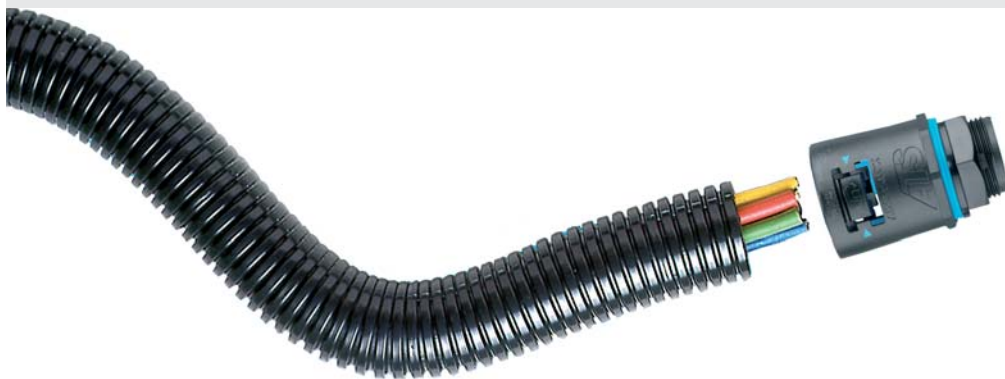
TYPE SFA IP66, 67, 68 (4 bar 30 min.) y 69k

STRAIGHT BODY - SWIVEL
INTERNAL FEMALE THREAD
Black (BL)



Nº	REFERENCE	PACKING
9	AT13/M16/SFA	10
9	-	-
11	AT16/M16/SFA	10
11	-	-
16	AT21/M20/SFA	10
16	-	-
21	AT28/M25/SFA	10
21	-	-
29	AT34/M32/SFA	10
29	-	-
36	AT42/M40/SFA	2
36	-	-
48	AT54/M50/SFA	2
48	AT54/M63/SFA	2

*Grey colour - Made to order





90° ELBOW

TYPE C90 IP66, 67, 68 (4 bar 30 min.) y 69k

90° ELBOW FITTING
FIXED EXTERNAL THREAD
Grey (GR) and Black (BL)



Nº	REFERENCE	PACKING
9	AT13/M16/C90	10
9	-	-
11	AT16/M16/C90	10
11	AT16/M20/C90	10
16	AT21/M20/C90	10
16	-	-
21	AT28/M25/C90	10
21	-	-
29	AT34/M32/C90	10
29	-	-
36	AT42/M40/C90	2
36	-	-
48	AT54/M50/C90	2
48	AT54/M63/C90	2

Locknut included





90° ELBOWS

TYPE CS90 IP66, 67, 68 (4 bar 30 min.) y 69k

90° ELBOW FITTING
SWIVEL EXTERNAL MALE THREAD
Black (BL)



Nº	REFERENCE	PACKING
9	AT13/M16/CS90	10
9	-	-
11	AT16/M16/CS90	10
11	-	-
16	AT21/M20/CS90	10
16	-	-
21	AT28/M25/CS90	10
21	-	-
29	AT34/M32/CS90	10
29	-	-
36	AT42/M40/CS90	2
36	-	-
48	AT54/M50/CS90	2
48	AT54/M63/CS90	2

*Grey colour - Made to order





NF
NORME FRAN AISE



90° ELBOWS

TYPE CSF90 IP66, 67, 68 (4 bar 30 min.) y 69k

90° ELBOW FITTING
SWIVEL INTERNAL FEMALE
THREAD
Black (BL)



Nº	REFERENCE	PACKING
9	AT13/M16/CSF90	10
9	-	-
11	AT16/M16/CSF90	10
11	-	-
16	AT21/M20/CSF90	10
16	-	-
21	AT28/M25/CSF90	10
21	-	-
29	AT34/M32/CSF90	10
29	-	-
36	AT42/M40/CSF90	2
36	-	-
48	AT54/M50/CSF90	2
48	AT54/M63/CSF90	2

*Grey colour - Made to order





45° ELBOWS

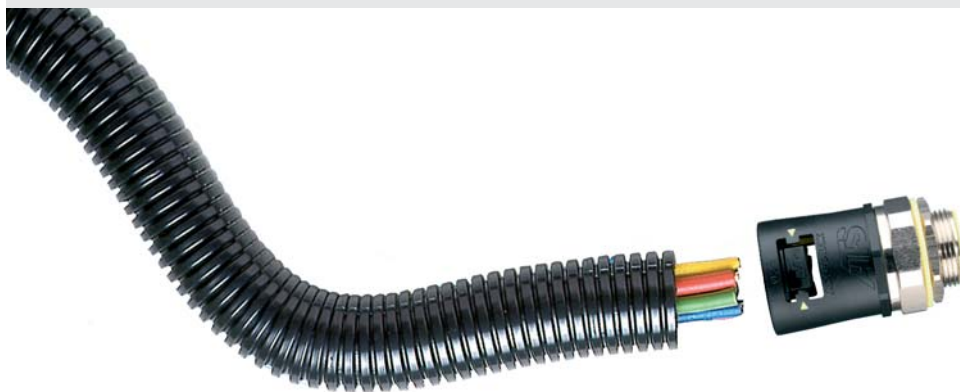
TYPE 45 IP66, 67, 68 (4 bar 30 min.) y 69k

45° ELBOW FITTING
FIXED EXTERNAL THREAD
Grey (GR) and Black (BL)



Nº	REFERENCE	PACKING
9	AT13/M16/45	10
9	-	-
11	AT16/M16/45	10
11	AT16/M20/45	10
16	AT21/M20/45	10
16	-	-
21	AT28/M25/45	10
21	-	-
29	AT34/M32/45	10
29	-	-
36	AT42/M40/45	2
36	-	-
48	AT54/M50/45	2
48	-	-

Locknut included





NF
NORME FRAN AISE



DB
Deutsche Bahn



45° ELBOWS

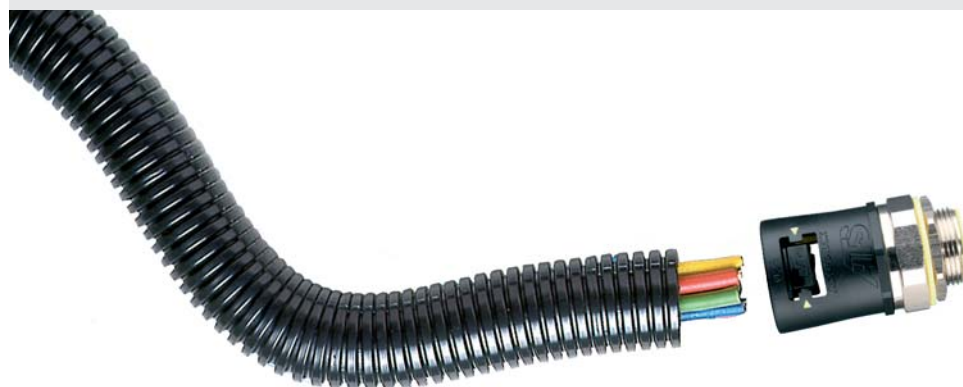
TYPE S45
IP66, 67, 68
(4 bar 30 min.) y 69k

45° ELBOW FITTING
SWIVEL EXTERNAL MALE
THREAD
Black (BL)



Nº	REFERENCE	PACKING
9	AT13/M16/S45	10
9	-	-
11	AT16/M16/S45	10
11	-	-
16	AT21/M20/S45	10
16	-	-
21	AT28/M25/S45	10
21	-	-
29	AT34/M32/S45	10
29	-	-
36	AT42/M40/S45	2
36	-	-
48	AT54/M50/S45	2
48	AT54/M63/S45	2

*Grey colour - Made to order



ADAPTAFLEX



NF
NORME FRAN AISE



45° ELBOWS

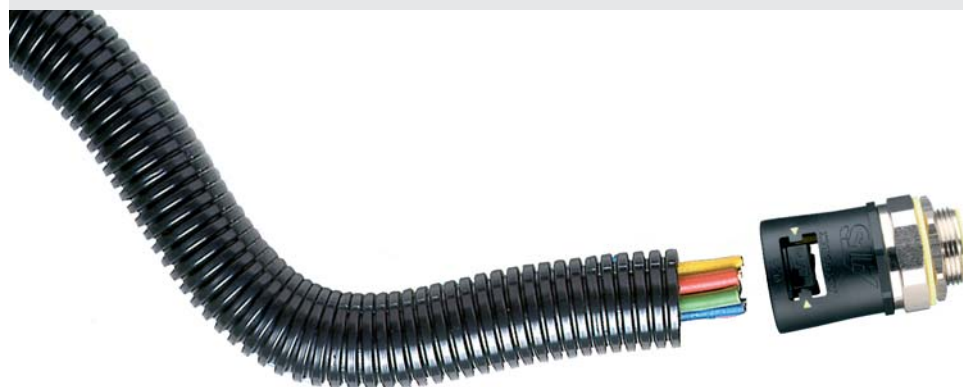
TYPE SF45 IP66, 67, 68 (4 bar 30 min.) y 69k

45° ELBOW FITTING
SWIVEL INTERNAL FEMALE
THREAD
Black (BL)



Nº	REFERENCE	PACKING
9	AT13/M16/SF45	10
9	-	-
11	AT16/M16/SF45	10
11	-	-
16	AT21/M20/SF45	10
16	-	-
21	AT28/M25/SF45	10
21	-	-
29	AT34/M32/SF45	10
29	-	-
36	AT42/M40/SF45	2
36	-	-
48	AT54/M50/SF45	2
48	AT54/M63/SF45	2

*Grey colour - Made to order



ADAPTAFLEX



NF
NORME FRAN AISE



FITTING FLA IP66, 67, 68 (4 bar 30 min.) y 69k

STRAIGHT PANEL MOUNTING
SWIVEL FLANGE
with integral face seal
Grey (GR) and Black (BL)



Nº	REFERENCE	PACKING
9	-	-
9	-	-
11	AT16/FL/A	10
11	-	-
16	AT21/FL/A	10
16	-	-
21	AT28/FL/A	10
21	-	-
29	-	-
29	-	-
36	-	-
36	-	-
48	AT54/FL/A	1
48	-	-





NF
NORME FRAN AISE

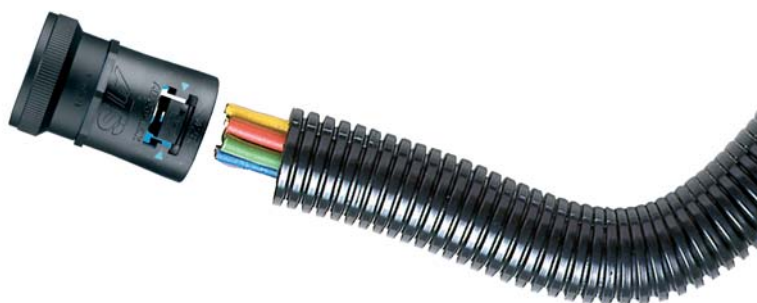


ELBOW FLC90 IP66, 67, 68 (4 bar 30 min.) y 69k

90° ELBOW BODY PANEL
MOUNT FLANGE
For panel mounting via 2 hole
fixing & integral face seal
Grey (GR) and Black (BL)



Nº	REFERENCE	PACKING
9	AT13/FL/C90	10
9	-	-
11	AT16/FL/C90	10
11	-	-
16	AT21/FL/C90	10
16	-	-
21	AT28/FL/C90	10
21	-	-
29	-	-
29	-	-
36	-	-
36	-	-
48	-	-
48	-	-





NF
NORME FRAN AISE



ELBOW FL45

IP66, 67, 68 (4 bar 30 min.) y 69k

45° PANEL MOUNTING SWIVEL FLANGE
with integral face seal
Grey (GR) and Black (BL)



Nº	REFERENCE	PACKING
9	-	-
9	-	-
11	AT16/FL/45	10
11	-	-
16	AT21/FL/45	10
16	-	-
21	AT28/FL/45	10
21	-	-
29	-	-
29	-	-
36	-	-
36	-	-
48	AT54/FL/45	1
48	-	-



NF
NORME FRAN AISE



SWIVEL COUPLER IP66, 67, 68 (4 bar 30 min.) y 69k

STRAIGHT PA66 BODY
SWIVEL COUPLER
Black (BL)



Nº	REFERENCE	PACKING
9	AT13/A/U	10
9	-	-
11	AT16/A/U	10
11	-	-
16	AT21/A/U	10
16	-	-
21	AT28/A/U	10
21	-	-
29	AT34/A/U	10
29	-	-
36	AT42/A/U	10
36	-	-
48	AT54/A/U	2
48	-	-

*Grey colour - Made to order